

# Yn y Lwp!

("In the loop")

Ysgol Cwm Brombil's Weekly Bulletin

## In this edition:

- Sporting Success
- Extra-Curricular Activities
- Reporting Absence
- YCB Gardens
- Shakespear Festival

### Autumn Term / Tymor y Hydref

Half Term : Monday 27<sup>th</sup> October - Friday 31<sup>st</sup> October /  
Hanner Tymor : Dydd Llun Hydref 27 – Dydd Gwener Hydref 31  
End / Diwedd: Friday 19<sup>th</sup> December 2025 / Dydd Gwener 19 Rhagfyr 2025

### Week Beginning - Monday 27<sup>th</sup> October

Monday		HALF TERM
Tuesday		
Wednesday		
Thursday		
Friday		

### Week Beginning - Monday 3<sup>rd</sup> November - Week 1

Monday		
Tuesday		
Wednesday		
Thursday		
Friday		



# Autumn Term 2025



Programme of activities and opportunities with this issue!  
Link to Enrichment Timetable - [Ysgol Cwm Brombil](#)

## School Photographs

We are delighted to announce that the school photograph of your child is available to purchase from Orion photography. The team were very complimentary of our students and have produced some extremely professional portraits.



**ORION**  
PHOTOGRAPHY

To access your child's portrait, follow the link or the QR code on the card your child brought home and enter their personal code. The website is:

[Orion Photography](#)

## Attendance Information



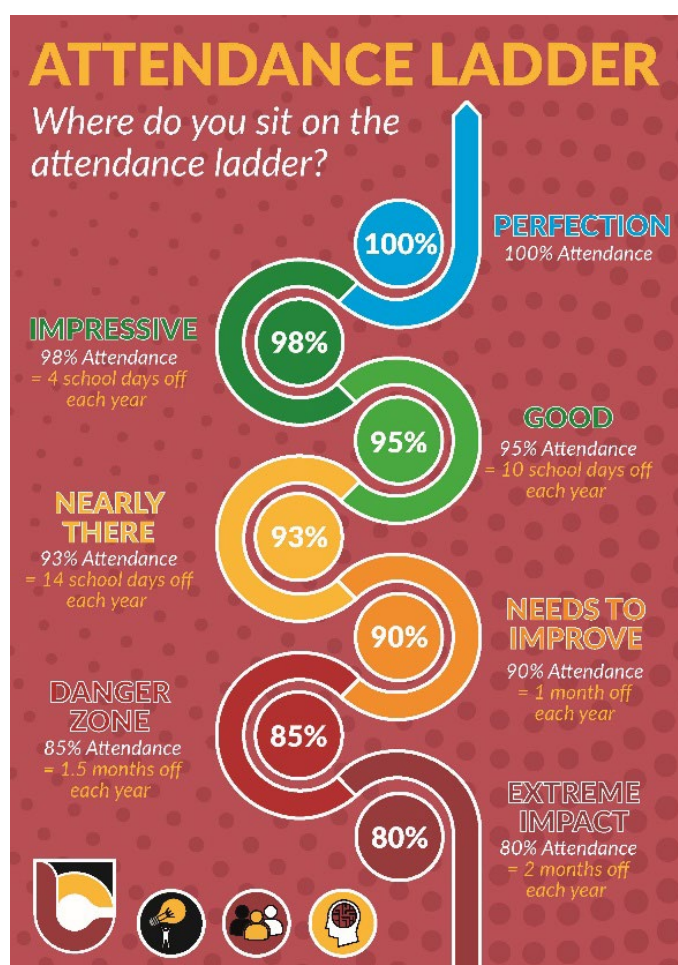
Our attendance target for all students is 100% and our minimum expectation is 95%. The infographic above shows the impact of days missed and minutes late can have on a child's learning.

For example:

- If a child is late to school just 5 minutes each day, throughout the year that equates to 3 days lost to learning (15 hours).
- Attendances of 97% allows for one day of absence per half term and results in 30 hours lost to learning

### Important Reminders:

1. Parents MUST contact school to report any absences. This can be done via ClassCharts (see next page) or by phoning the school on **01639 760110** before **8.30 am**.
2. Parents should contact the school **each day** that a pupil is not attending.
3. If the school are not notified, then **you will be contacted** by a member of the Attendance team to find out why your child is not in school.
4. If we are not notified of the reason for the absence it will be recorded as **unauthorised absence**.
5. If there are three unauthorised absences in a row, the Safeguarding Lead and Education Welfare Officer will be made aware to ensure that your child is safe.
6. You will be required to produce medical evidence if you state that your child is ill for 3 or more consecutive days.
7. We will ask the school Healthcare Professional to contact you if there is an absence of more than 2 weeks.
8. Term time leave will only be granted by the headteacher on request.
9. Where possible, **all appointments should be made outside of the school day**.



## Reporting your child's absence

In order to improve our efficiency tracking absences, we have enabled the reporting absence option on ClassCharts. When you go into the ClassCharts Parent app for your child, you will now see an absences tab on the top. (scroll across if it is not immediately visible).

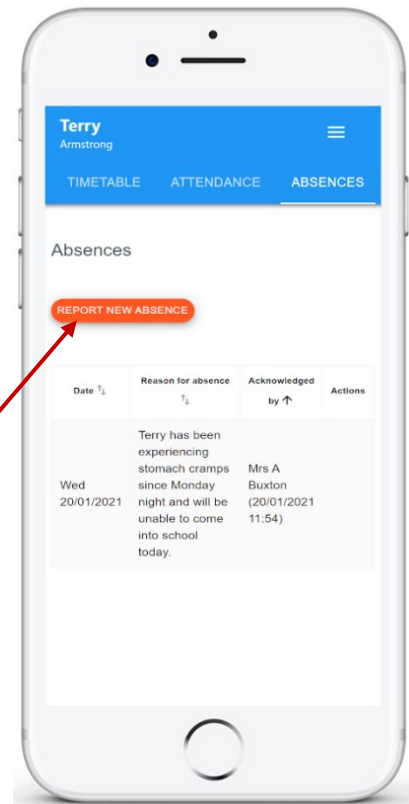
Selecting this tab will display a list of absences that you have reported, once you have reported them. This includes when the absence took place, the reason for the absence and who acknowledged your absence report.

To report an absence, click on the "Report new absence" button.

Next, enter the details of the reported absence into the form provided.

You can also include up to 5 files in your absence report as supporting evidence. To do this, click on the "Attach supporting Evidence" button and select the files of your choice.

Click on the Submit button to send your pupil's absence report to their school. The absence can be edited and deleted until it has been acknowledged by a member of staff.



The screenshot shows the 'Report New Absence' form in the ClassCharts Parent app. The form has a title bar with 'Date of absence' and a close button (X). The 'Date of absence' field is filled with '26/01/2021'. Below this is the 'Reason for absence' field, which contains the text 'Terry missed the bus today.' There is a blue link 'Reason for absence' above the text. Below the reason field is a grey box with the text 'Please report your child's absences as soon as possible'. Underneath is the 'Attachments' section, which features a red button with a plus sign and the text '+ ATTACH SUPPORTING EVIDENCE'. Below the attachments section is a note: 'You can upload a maximum of 5 attachments, each up to 250mb in size.' At the bottom of the form are two buttons: 'SUBMIT' and 'CANCEL'.

## Hydration Station

Last year the health forum had begun to work on improving the quality of the water fountains after hearing numerous complaints. We had been told that the water tasted metallic and wasn't very nice to drink. This meant pupils were buying water in plastic bottles and not refilling them. After pestering Mr Clarke for improvements to the drinking water situation, we worked with him in researching possible water companies to bring to our school. We attended a meeting with Smart Soda. Not only did they offer fresh and cold water they also offered a hydration station which included three flavours. As a health forum it was vital to us that it would be healthy but we knew that this would appeal more to students. The flavours are made from completely natural sugars and include added vitamins and minerals such as B6 which increases energy. All of these added vitamins can boost your overall health and energy immensely.



In the last school year during summer term, we held a fundraiser. Every enrichment group was given the choice to hold a stall. There was a range of fun games for pupils to play (the most popular being Sponge the Teacher!) as well as multiple stalls selling treats, fruit, and drinks. This was an extremely fun day for everyone to enjoy and it raised sufficient funds to allow us to invest in a brand-new hydration station as well as a new water dispenser in both the secondary and primary sides of the building. We have noticed many improvements in attitudes to hydration since the beginning of term. Evidently, it is quite easy to neglect hydration when you are busy in school, however the hydration station has proved to be very popular.



Alongside the station we have also been working to phase out the use of plastic bottles in the school. It has encouraged people to bring their own water bottles, and we provided many with free reusable water bottles. Overall, the number of plastic bottles used in our school has decreased greatly and hydration is improving resulting in an improvement of schoolwork. The flavoured water is obtained by purchasing a token in the canteen. The water dispensers are free. Reusable drinking bottles can be purchased from the Ready to Learn shop for £1.50 or 250 ClassCharts points.

## YCB Gardens

Looking for a group to enjoy a bit of gardening, learn something new, and spend time with like-minded people?

Our Outdoor Learning Committee is looking for enthusiastic volunteers to help out in our school vegetable garden!

It's a great way to give back to the community, meet new people, and get involved in something rewarding – no experience needed.

Plus, there's a free hot drink from the lovely Cwtch Café for all volunteers.

We'll meet on the first Saturday of every month, starting November 1st, from 10am–12pm.

Everyone welcome.



**NEW!**

MONTHLY ADULTS VOLUNTEER GROUP  
First Saturday every month  
Starting November 1st 10am–12pm  
Everybody Welcome



The end of term is fast approaching, and our Outdoor Learning pupils are coming to the end of their first units of the year.

Our Year 9s are getting ready to share the health benefits of the outdoors with their parents next week during our Autumn Wellbeing Afternoon.

Our Year 10s are learning about the safety equipment and clothing needed for various outdoor activities.

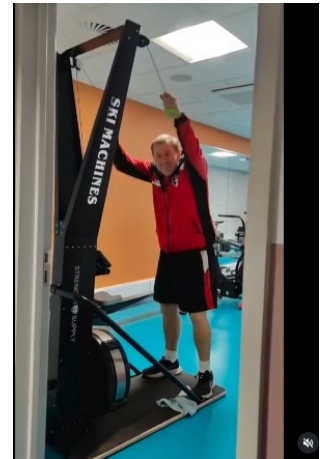
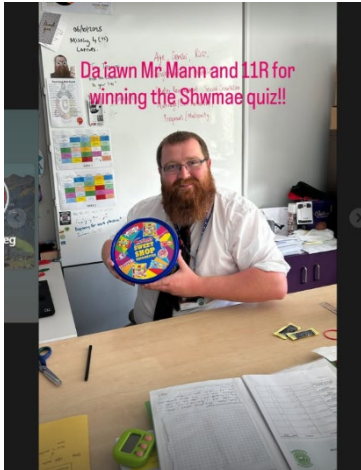
Our trailblazing Year 11s have been testing out different camp stoves, assessing their pros and cons.



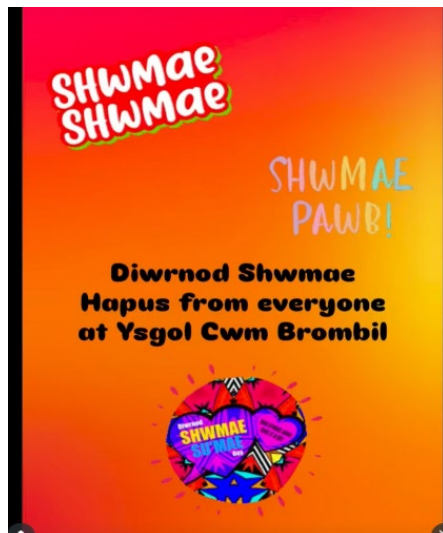
Outdoor Learning helps our pupils grow in confidence, strengthen teamwork, and discover the value of learning through experience. Its been an amazing week with amazing pupils



# Criw Cymraeg and the Siarter Iaith- Hydref 2025



The week of the 13<sup>th</sup> October we celebrated Shwmae Week. A week of celebrating siarad Cymraeg (speaking Welsh). We started off the week with a photobooth. Criw Cymraeg then went and filmed all year groups from Reception to Year 11, including teaching and non-teaching staff saying "Shwmae" which was put into a video on all the school's socials.



# Shakespeare Festival

Our Year 10 GCSE Drama pupils will be performing *Romeo and Juliet* on Tuesday, 4th November 2025 at The Gwyn Hall, Neath, as part of the Shakespeare Schools Festival 2025.

This is a fantastic opportunity for our pupils to take to a professional stage and bring Shakespeare's iconic language and characters to life. The students have been working incredibly hard in rehearsals, and it promises to be a wonderful evening of Shakespearean performances from schools across Neath and Port Talbot.

We would love for you to come along and support our talented pupils as they showcase their creativity and passion for drama.

Tickets are available to purchase from the Gwyn Hall Box Office.





# International Club



## UPCOMING

After the half term holidays another group of students from Galicia are also set to visit our school and so a new set of buddies from our club have been selected and we look forward to welcoming our new guests.



## GALICIAN STUDENTS

Last Monday (13<sup>th</sup>) YCB welcomed 19 students from Galicia, Spain. The students visited from Vigo in Galicia and were visiting Wales to practice their English speaking and to enjoy Welsh culture. The visitors were met by our international club whom provided tour guides and friends in the form of our members. In this buddy system a pupil from our school would take on the responsibility of escorting our guests to lessons and ensuring they felt safe in our school. Over the course of the 10 days they were in Wales our students made great friends with the Spanish visitors, and on their last day they exchanged cards, chocolates and the occasional tearful goodbye. To conclude the endeavor was a great success and members of the international club displayed great responsibility, compassion and kindness and of course our visitors had a blast!



## CELTIC SIMILARITIES

Wales and Galicia, Spain share Celtic similarities through ancient tribal connections, archaeological evidence, linguistic traces, and surviving cultural elements such as music and symbols. Both regions are part of the Celtic nations because of historical presence of Celtic tribes, such as the Gallaeci in Galicia, and the Ordovices and the Silures in Wales. In fact there was a migration of Britons to Galicia, establishing cultural and genetic links that persist today.

# Sporting Success

## Football

It was fantastic to see our team take on new opposition this week, providing many pupils with their first opportunity to represent the school. The players showed great enthusiasm, teamwork, and sportsmanship throughout what was a thoroughly enjoyable afternoon of football.

A brilliant effort from everyone involved, well done to all who took part!



A huge well done to our Year 8 Girls Football Team, who played brilliantly this evening against a strong and well-drilled Cwmtawe side. The girls showed fantastic determination, teamwork, and skill throughout the match, rising to the challenge with real confidence and enthusiasm.

Their effort, attitude, and team spirit were outstanding – a performance to be very proud of. Well done, girls!

It was fantastic to see another strong performance from our Year 7 Football Team, this time in the Welsh Cup. The players showed an excellent attitude and tremendous effort from start to finish, demonstrating great teamwork and commitment throughout the match.

Their continued improvement and positive approach are a real credit to the team – well done, Year 7!





**YSGOL CWM BROMBIL EXTRA CURRICULAR PROGRAMME – AUTUM TERM 2024**  
**MONDAY 8<sup>th</sup> SEPTEMBER - DECEMBER 12<sup>th</sup>**

**PLEASE NOTE!! – AFTERSCHOOL CLUBS AND TRAINING WILL FINISH BY 4PM AND PUPILS HAVE TO FIND THEIR OWN TRANSPORT HOME.**

**ALL CLUBS ARE SUBJECT TO CANCELLATION AS FIXTURES WILL TAKE PRIORITY**

**FOR SPORTS FIXTURES PLEASE LOOK AT THE FIXTURE BOARD ON FRIDAY FOR MATCHES THE FOLLOWING WEEK. THE COMPLETION TIMES OF THESE FIXTURES WILL VARY AND WILL BE COMMUNICATED WITH YOU.**

<b>WEEK 1 and 2 (AFTER SCHOOL)</b>			
<b>DAY</b>	<b>ACTIVITY</b>	<b>YEAR GROUP</b>	<b>VENUE</b>
<b>MONDAY</b>	RUGBY (until further notice)	7 AND 8	3G
	NETBALL	7 AND 8	SPORTS HALL
	STRENGTH AND CONDITIONING	9, 10, 11	BACK GYM/MULITGYM
<b>TUESDAY</b>	NETBALL	9, 10, 11	SPORTSHALL
<b>WEDNESDAY</b>	BADMINTON	ALL YEARS	SPORTS HALL
	GIRLS FOOTBALL	ALL YEARS	3G/GRASS
<b>THURSDAY</b>	STRENGTH AND CONDITIONING	ALL YEARS	BACK GYM/MULITGYM

<b>WEEK 1 and 2 (LUNCH TIME)</b>			
<b>DAY</b>	<b>ACTIVITY</b>	<b>YEAR GROUP</b>	<b>VENUE</b>
<b>MONDAY</b>	S+C	9, 10, 11	BACK GYM
<b>TUESDAY (WEEK 2 ONLY)</b>	BADMINTON/PICKLEBALL	7 AND 8	SPORTSHALL
<b>WEDNESDAY</b>	BADMINTON/S+C	9,10,11	SPORTSHALL/BACKGYM
<b>THURSDAY</b>	BASKETBALL	7 AND 8	SPORTSHALL

*For lunchtime activities pupils can wear school uniform or GET CHANGED if they choose.*

*Pupils do not wear PE kit to school unless they have a practical PE lesson on the same day.*

*All clubs are also subject to cancellation when other school commitments are required priority.*

# Ysgol Cwm Brombil Social Media Accounts

You can keep up to date with so many things that go on every day at Ysgol Cwm Brombil by following our school Instagram: We also have Instagram account of other departments and clubs in in our school. Why not follow some of our accounts (links in the logos) and give them likes!



## MAINTAIN DENTAL AND ORAL HEALTH

# Dental Care



Electric toothbrush better for plaque removal ✓

Medium-bristled brush best for removing plaque and debris ✓

Replace toothbrush every 3 months ✓

Brush for at least two minutes twice a day ✓



Pea sized amount of toothpaste ✓

Do not rinse mouth after brushings ✓

Toothpaste should contain at least 1,350 parts per million fluoride ✓



Regular flossing reduces gum disease, tooth decay and bad breath ✓

Use a fluoride mouthwash at a different time to brushing your teeth ✓



Have a healthy lifestyle, including eating well, not smoking and limiting your alcohol and sugar intake. It's good for your whole body, including your teeth, gums and mouth.

## School Uniform Expectations

All students are expected to wear school uniform throughout the school day.  
Below are uniform guidelines for both boys and girls, as well as PE Kit:

<b>All pupils Year 7 to 11</b>		
Blazer	Black school blazer	Available from Bergoni. Blazers must be brought to school and worn every day.
Shirt	White shirt with collar.	Can be purchased from any retailer.
Trousers	Plain black tailored uniform style trousers.	Jean style, corduroys, skinny or casual trousers are not permitted.
Skirt *	Plain black school uniform style skirt.	Skirts should be an appropriate length.
Tights	Plain black tights	Tights are to be worn with skirts and can be purchased from any retailer.
Shoes	Black shoes with black laces.	Available from any retailer. Black leather converse shoes are permitted. <b>NO TRAINERS</b>
Tie	School tie.	Available from Bergoni.
Jumper	Black with badge.	Available from Bergoni. Jumpers are optional.
Shorts	Black tailored shorts.	Only for the summer term. Not PE shorts.
Outdoor coat/Jacket	Coats should be waterproof and black in colour.	Available from any retailer.
Socks (only if not wearing tights)	Ankle height, plain black or white.	Available from any retailer.

**Please note hoodies are not allowed in school.  
Any pupil who refuses to remove them during the day will have them confiscated.**

### Physical Education

Unisex T Shirt	Available exclusively from Bergoni
Rugby Jersey	Available exclusively from Bergoni
Shorts	Available exclusively from Bergoni
Socks	Available exclusively from Bergoni
Unisex ¼ zipped top	Optional item. Available exclusively from Bergoni
Plain black tracksuit bottoms	Optional available at any retail store
Skort or Legging (recommended to go a size bigger than your normal clothes size as they are smaller sizes.)	Available exclusively from Bergoni

**Please note, even on PE days, hoodies are not allowed in school.  
Pupils are expected to wear a long sleeve PE top when cold.**

For further information regarding our uniform expectations please see our [school website](#):

## The Pantry

Our weekly food bank is open every Thursday from 3.15. This is available to anyone within our school community, no referral needed, please just drop in as and when needed.

We all need a little help sometimes. Entrance to the Food Bank – The Pantry is accessed via the pupil entrance in the senior phase school, inside the canteen area.

Refreshments will be provided for everyone waiting, we look forward to seeing you, please remember to bring your bags with you.



## Donations

We are always grateful for any donations that you can provide towards our food bank, we always need the below items. There is a drop off trolley in reception:

- Tinned Goods:
  - Meats – hotdogs, minced beef, pies, meatballs, curries etc.
  - Beans
  - Beans and Sausage
  - Spaghetti
  - Tinned Veg
    - Potatoes,
    - carrots,
    - peas,
    - sweetcorn
  - Tuna
  - Tinned fruits
- Cereal
- UHT Milk
- Pasta – including sauces
- Toiletries
  - Shampoo,
  - Shower gel,
  - Conditioner,
  - Toothpaste
  - Toilet rolls

\*Please NO sanitary products, we have lots in stock



THANK YOU FOR YOUR SUPPORT

# Aspire Business Network



Let's collaborate, connect, & support the growth of our local business community.

## This weeks business in the spotlight:

Mollam Wealth is a local Financial Planning Practice who specialises in pension & investment planning, as well as giving advice on mortgages and life insurance.

Navigating the world of finance in this day and age can be a minefield but having an expert adviser on your side can help you make those important decisions with confidence.

The team at Mollam Wealth can help you understand what your pension benefits actually mean. They can help you decide whether bringing various pension together is right thing to do, and if you're self-employed and haven't started your pension savings yet, they can help you with that. Paul and the team at Mollam Wealth are always happy to have a no obligation conversation about your individual needs.



Contact us: 07909602890 email - [paul.phillips@sjpp.co.uk](mailto:paul.phillips@sjpp.co.uk)

To join our Aspire Business Network visit: [www.aspire-bn.co.uk](http://www.aspire-bn.co.uk)

**ADVERTISE YOUR BUSINESS HERE!**

ON THE 3G PITCH AT YSGOL CWM BROMBIL



**PRIME LOCAL EXPOSURE - SEEN BY HUNDREDS WEEKLY**

Grab the attention of players, parents, and the wider community with a custom banner on our 3G pitch

**ONLY £250 PER PANEL PER YEAR!**



We'll professionally produce and install your full-colour banner

 Ysgol Cwm Brombil, Port Talbot

**CONTACT US TODAY** For more information  
[office@ysgolcwmbrombil.npt.school](mailto:office@ysgolcwmbrombil.npt.school)

## Term dates for 2025-26

Autumn Term, half term 1 2024-25	
Tuesday 2 <sup>nd</sup> September 2025	Year 7 & 11 attend school
Wednesday 3 <sup>rd</sup> September 2025	All pupils attend school
Thursday 23 <sup>rd</sup> October 2025	Last Day of half term 1 for pupils
Friday 24 <sup>th</sup> October 2025	Staff INSET (Training) Day
Half Term holiday - Monday 27 <sup>th</sup> October 2025 – Friday 31 <sup>st</sup> October 2025	
Autumn Term, half term 2 2025-26	
Monday 3 <sup>rd</sup> November 2025	Term starts
Friday 28 <sup>th</sup> November 2025	Staff INSET (Training) Day
Monday 1 <sup>st</sup> December 2025	Staff INSET (Training) Day
Friday 19 <sup>th</sup> December 2025	Last Day of half term 2
Christmas Holiday – Monday 22 <sup>nd</sup> December 2025 – Friday 2 <sup>nd</sup> January 2026	
Spring Term, half term 3 2025-26	
Monday 5 <sup>th</sup> January 2026	Staff INSET (Training) Day
Tuesday 6 <sup>th</sup> January 2026	Half term 3 Starts for all pupils
Friday 13 <sup>th</sup> February 2026	Last Day of half term 3
Half Term holiday - Monday 16 <sup>th</sup> February 2026 – Friday 28 <sup>th</sup> February 2026	
Spring Term, half term 4 2025-26	
Monday 23 <sup>rd</sup> February 2026	Term 4 Starts
Friday 27 <sup>th</sup> March 2026	Last Day of half term 4 for pupils
Easter holiday - Monday 30 <sup>th</sup> March 2026 - Friday 10 <sup>th</sup> April 2026	
Summer Term, half term 5 2025-26	
Monday 13 <sup>th</sup> April 2026	Term 5 Starts
Monday 4 <sup>th</sup> May 2026	May Day Bank Holiday
Friday 22 <sup>nd</sup> May 2026	Last Day of half term 3
Half Term - Monday 24 <sup>th</sup> May 2025 - Friday 29 <sup>th</sup> May 2026	
Summer Term Half term 6 2025-26	
Monday 1 <sup>st</sup> June 2026	Half term 6 Starts
Friday 17 <sup>th</sup> July 2026	Last Day of half term 6 & end of the school Year

